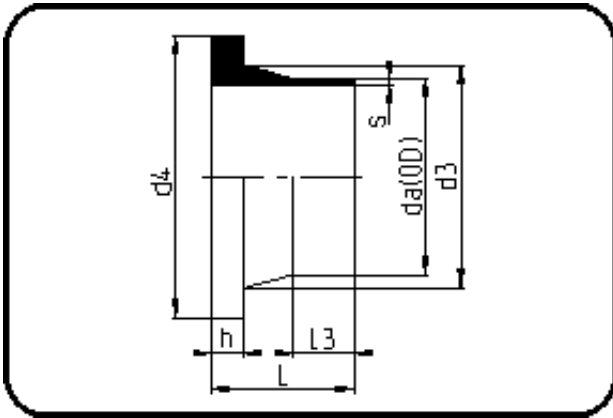


Fittings



Code: 012.1

- **Stub Flange ANSI**
- short spigot
- injection moulded
- **Butt + IR-welding**
- **PVDF UHP natural**

Backing Rings please see Accessories.

Dimension	Code	Detail	Weight
90	35.012.1090.33	90X2,8 SDR33 ISO S-16	0.33

	Unit	Nominale	Tol+	Tol-
da(OD)	mm	90	0.40	0.00
L	mm	80	3.75	0.00
L3	mm	42	1.50	0.00
s	mm	2,8	0.50	0.00
d3	mm	105	0.00	4.50
h	mm	11	0.75	0.00
d4	mm	132,4	0.00	1.50
da	inch	3	0.00	0.00