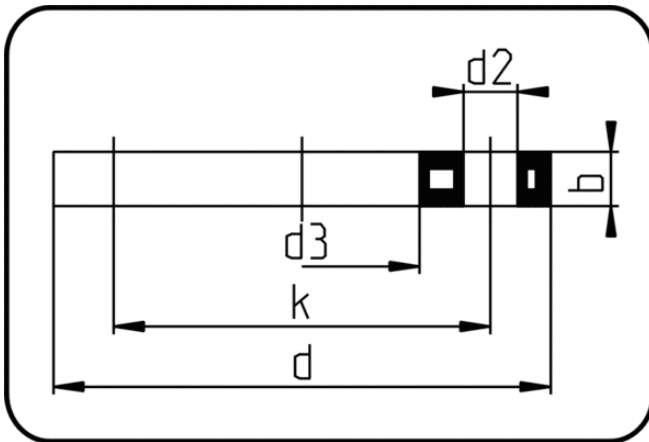


Backing Rings, Accessories



Code: 023

- **Backing Ring JIS**
- steel insert/for stub flange
- injection moulded
- **Flange connection**
- **PP-FRP grey**

The torques nm[NM] specified in the technical catalogue are to be used as maximum values.

Dimension	Code	Detail	da(OD) mm	d mm	d2 mm	d3 mm	b mm	k mm	Weight
20	11.023.0020.11	20 - 1/2" - MOP 16 bar	20	96	15	28	12	70	0.25
25	11.023.0025.11	25 - 3/4" - MOP 16 bar	25	100	15	34	14	75	0.30
32	11.023.0032.11	32 - 1" - MOP 16 bar	32	125	19	42	14	90	0.47
40	11.023.0040.11	40 - 1 1/4" - MOP 16 bar	40	135	19	51	14	100	0.53
50	11.023.0050.11	50 - 1 1/2" - MOP 16 bar	50	140	19	62	16	105	0.62
63	11.023.0063.11	63 - 2" - MOP 16 bar	63	159	19	78	16	120	0.75
75	11.023.0075.11	75 - 2 1/2" - MOP 16 bar	75	175	19	92	16	139	0.90
90	11.023.0090.11	90 - 3" - MOP 16 bar	90	185	19	110	18	150	0.85
110/125	11.023.0110.11	110/125 - 4" - MOP 16 bar	110	210	19	133	18	175	1.00
140	11.023.0140.11	140 - 5" - MOP 16 bar	140	250	23	158	20	210	1.59
160	11.023.0160.11	160 - 6" - MOP 16 bar	160	280	22	178	22	240	2.50
180	11.023.0180.11	180 - 6" - MOP 16 bar	180	285	22	190	23	240	2.19
200/225	11.023.0225.11	200/225 - 8" - MOP 16 bar	225	330	23	238	22	290	2.94
250	11.023.0250.11	250 - 10" - MOP 16 bar	250	400	25	288	26	355	5.52
280	11.023.0280.11	280 - 11" - MOP 16 bar	280	400	25	294	26	355	5.55
315	11.023.0315.11	315 - 12" - MOP 16 bar	315	449	25	337	30	400	7.20