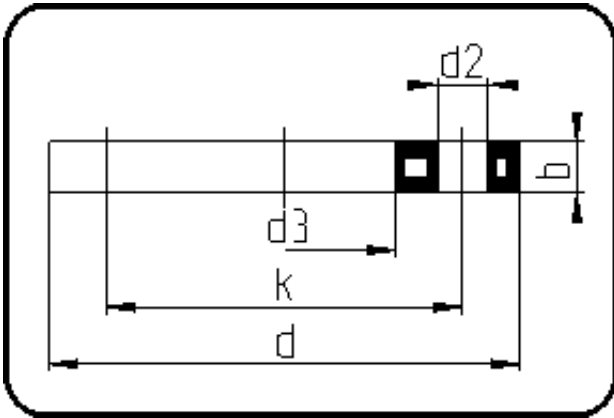


Backing Rings, Accessories



Code: 11.013

- Backing Ring ANSI
- steel insert
- injection moulded
- **Flange connection**
- **PP-FRP grey**

The torques nm[NM] specified in the technical catalogue are to be used as maximum values.

Dimension	Code	Detail	Weight
140	11.013.0140.11	140 - 5" - MOP 16 bar	2.25

	Unit	Nominale	Tol+	Tol-
da(OD)	mm	140	0.00	0.00
b	mm	24	1.00	1.00
numb	pc	8	0.00	0.00
d	mm	258	1.00	1.00
d3	mm	158	1.50	0.00
nm	[NM]	85	0.00	0.00
d2	mm	22	0.50	0.50
p	bar	16	0.00	0.00
da	inch	5	0.00	0.00
k	mm	215,9	0.50	0.50