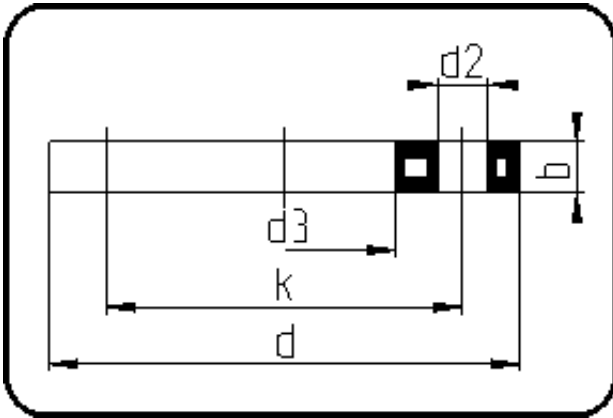


Backing Rings, Accessories



Code: 11.013

- Backing Ring ANSI
- steel insert
- injection moulded
- **Flange connection**
- **PP-FRP grey**

The torques nm[NM] specified in the technical catalogue are to be used as maximum values.

Dimension	Code	Detail	Weight
40	11.013.0040.11	40 - 1 1/4" - MOP 16 bar	0.56

	Unit	Nominale	Tol+	Tol-
da(OD)	mm	40	0.00	0.00
b	mm	16	1.50	1.50
numb	pc	4	0.00	0.00
d	mm	130	1.50	1.50
d3	mm	51	2.25	0.00
nm	[NM]	30	0.00	0.00
d2	mm	16	0.75	0.75
p	bar	16	0.00	0.00
da	inch	1,25	0.00	0.00
k	mm	88,9	0.75	0.75