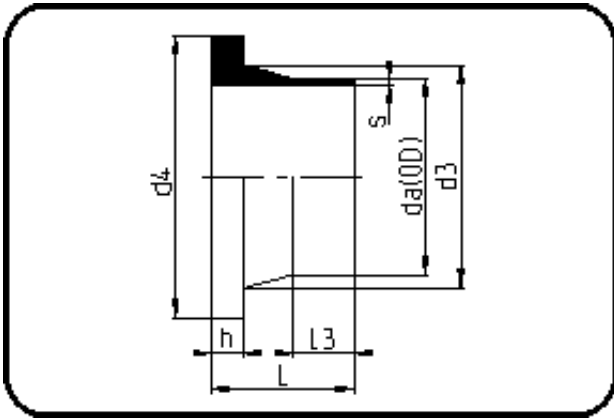


## Fittings



Code: 012

- Stub Flange DIN
- short spigot
- injection moulded
- **Butt + IR-welding**
- **PP Pure grey**

Backing Rings please see Accessories.

Dimension	Code	Detail	Weight
180	72.012.0180.11	180X16,4 SDR11 ISO S-5	0.99

	Unit	Nominale	Tol+	Tol-
da(OD)	mm	180	1.70	0.00
L	mm	93	3.75	0.00
L3	mm	43	1.50	0.00
s	mm	16,4	1.80	0.00
d3	mm	183	0.00	4.50
h	mm	30	1.50	0.00
d4	mm	212	0.00	1.50