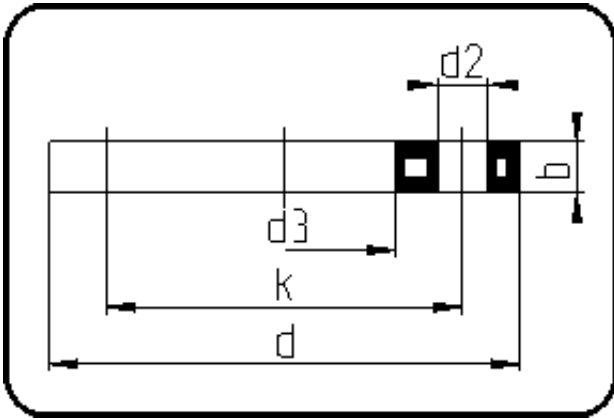


Backing Rings, Accessories



Code: 11.013

- Backing Ring ANSI
- steel insert
- injection moulded
- **Flange connection**
- **PP-FRP grey**

The torques nm[NM] specified in the technical catalogue are to be used as maximum values.

Dimension	Code	Detail	Weight
90	11.013.0090.11	90 - 3" - MOP 16 bar	1.06

	Unit	Nominale	Tol+	Tol-
da(OD)	mm	90	0.00	0.00
b	mm	18	1.50	1.50
numb	pc	4	0.00	0.00
d	mm	194	1.50	1.50
d3	mm	111	2.25	0.00
nm	[NM]	55	0.00	0.00
d2	mm	20	0.75	0.75
p	bar	16	0.00	0.00
da	inch	3	0.00	0.00
k	mm	152,4	0.75	0.75