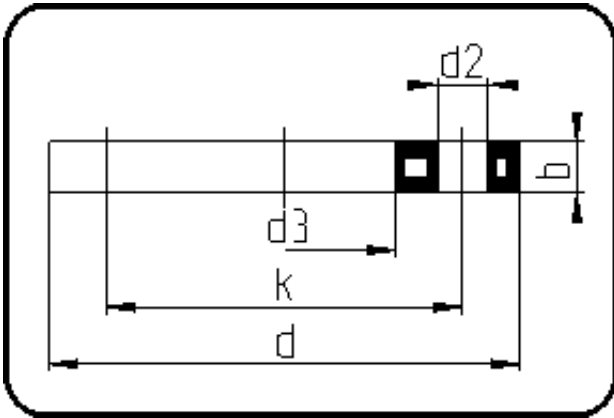


Backing Rings, Accessories



Code: 11.013

- Backing Ring ANSI
- steel insert
- injection moulded
- **Flange connection**
- **PP-FRP grey**

The torques nm[NM] specified in the technical catalogue are to be used as maximum values.

| Dimension | Code | Detail | Weight |
|-----------|----------------|---------------------------|--------|
| 200/225 | 11.013.0200.11 | 200/225 - 8" - MOP 16 bar | 3.89 |

| | Unit | Nominale | Tol+ | Tol- |
|--------|------|----------|------|------|
| da(OD) | mm | 200 | 0.00 | 0.00 |
| b | mm | 24 | 1.50 | 1.50 |
| numb | pc | 8 | 0.00 | 0.00 |
| d | mm | 345 | 1.50 | 1.50 |
| d3 | mm | 236 | 2.25 | 0.00 |
| nm | [NM] | 120 | 0.00 | 0.00 |
| d2 | mm | 22 | 0.75 | 0.75 |
| p | bar | 16 | 0.00 | 0.00 |
| da | inch | 8 | 0.00 | 0.00 |
| k | mm | 298,45 | 0.75 | 0.75 |