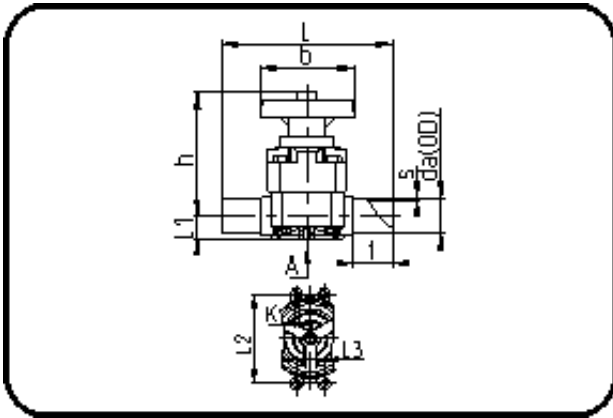


Valves



Code: 342.15

- Diaphragm Valve
- manually controlled
- EPDM/PTFE diaphragm
- **Butt + IR-welding**
- **PP Pure grey**

Dimension	Code	Detail	Weight
110	72.342.1511.11	110 - SDR11 ISO S-5	9.92

	Unit	Nominale	Tol+	Tol-
L	mm	340	3.00	3.00
s	mm	10	1.10	0.00
t	mm	50	1.50	1.50
Kv- l	min	3.750	0.00	0.00
da(OD)	mm	110	1.00	0.00
L1	mm	25	0.75	0.75
L3	mm	85	0.00	0.00
L2	mm	280	0.75	0.75
b	mm	234	1.50	1.50
DN	mm	100	0.00	0.00
h	mm	320	3.00	3.00
K	mm	M12	0.00	0.00
da	inch	4	0.00	0.00