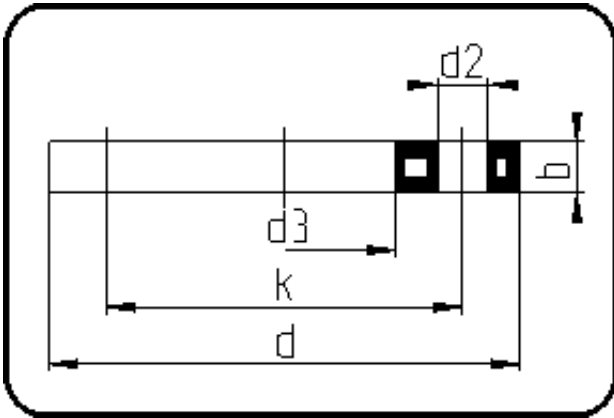


Backing Rings, Accessories



Code: 11.013

- Backing Ring ANSI
- steel insert
- injection moulded
- **Flange connection**
- **PP-FRP grey**

The torques nm[NM] specified in the technical catalogue are to be used as maximum values.

Dimension	Code	Detail	Weight
250/280	11.013.0250.11	250/280 - 10" - MOP 16 bar	6.09

	Unit	Nominale	Tol+	Tol-
da(OD)	mm	250	0.00	0.00
b	mm	26	1.50	1.50
numb	pc	12	0.00	0.00
d	mm	412	1.50	1.50
d3	mm	288	2.25	0.00
nm	[NM]	130	0.00	0.00
d2	mm	25	0.75	0.75
p	bar	16	0.00	0.00
da	inch	10	0.00	0.00
k	mm	361,95	0.75	0.75