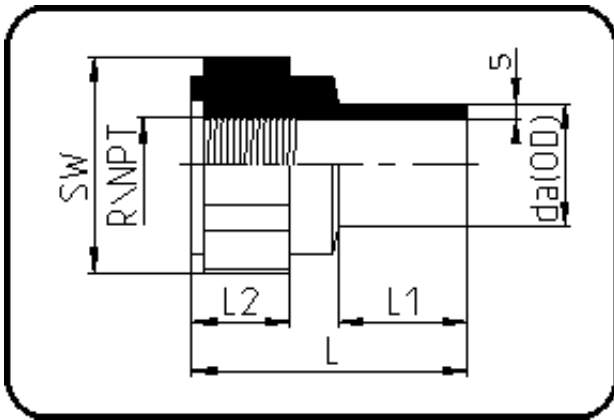


Fittings



Code: 032.1

- Adaptor Female Thread
- NPT-thread
- injection moulded
- **Butt + IR-welding**
- **PP natural**

Dimension	Code	Detail	Weight
63	16.032.6364.11	63X2" SDR11 ISO S-5	0.16

	Unit	Nominale	Tol+	Tol-
da(OD)	mm	63	0.60	0.00
L	mm	75	3.00	3.00
L1	mm	36	1.50	1.50
NPT	inch	2	0.00	0.00
nr	ril	1,77	0.00	0.00
SW	mm	85	2.25	2.25
L2	mm	30	1.50	1.50
s	mm	5,8	0.70	0.00
E	mm	11,07	0.00	0.00
K	mm	57,63	0.00	0.00