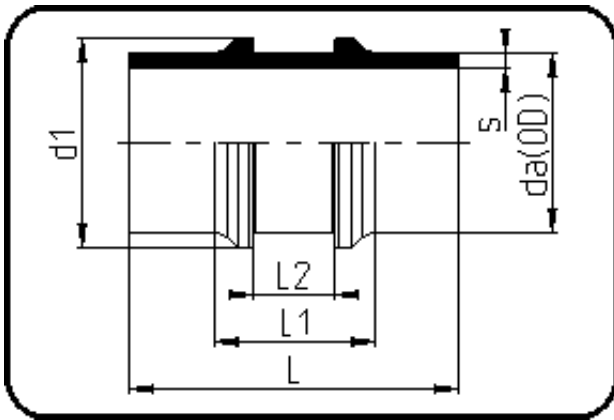


Fittings



Code: 301

- **Restrained Fitting**
- machined
- **Butt + IR-welding**
- **PP Pure grey**

Dimension	Code	Detail	Weight
180	72.301.0180.11	180X16,4 SDR11 ISO S-5	1.95

	Unit	Nominale	Tol+	Tol-
da(OD)	mm	180	0.50	0.00
L	mm	200	1.50	1.50
L1	mm	110	1.50	1.50
L2	mm	61	0.75	0.00
s	mm	16,4	1.80	0.00
d1	mm	205	0.75	0.75