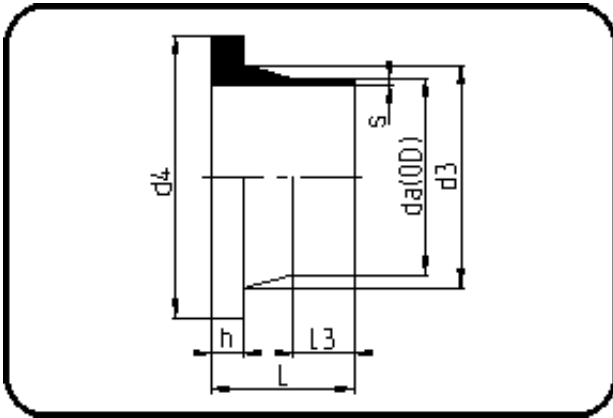


## Fittings



Code: 012.1

- **Stub Flange ANSI**
- short spigot
- injection moulded
- **Butt + IR-welding**
- **PP Pure grey**

Backing Rings please see Accessories.

Dimension	Code	Detail	Weight
90	72.012.1090.11	90X8,2 SDR11 ISO S-5	0.31

	Unit	Nominale	Tol+	Tol-
da(OD)	mm	90	0.90	0.00
L	mm	82	3.75	0.00
L3	mm	40	1.50	0.00
s	mm	8,2	1.00	0.00
d3	mm	105	0.00	4.50
h	mm	17	1.50	0.00
d4	mm	132,4	0.00	1.50
da	inch	3	0.00	0.00