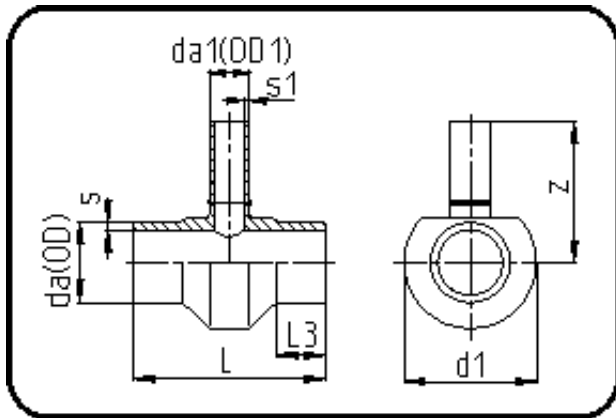


Fittings



Code: 307

- Tee reduced
- machined
- Butt + IR-welding
- PVDF UHP natural

Dimension	Code	Detail	Weight
225/90	35.307.2290.21	225/90 SDR21 ISO S-10	5.99

	Unit	Nominale	Tol+	Tol-
da(OD)	mm	225	1.40	0.00
L	mm	230	2.00	2.00
L3	mm	50	1.00	1.00
s	mm	10,8	1.30	0.00
d1	mm	265	1.00	1.00
s1	mm	4,3	0.70	0.00
da(OD1)	mm	90	0.40	0.00
z	mm	222,5	9.00	9.00