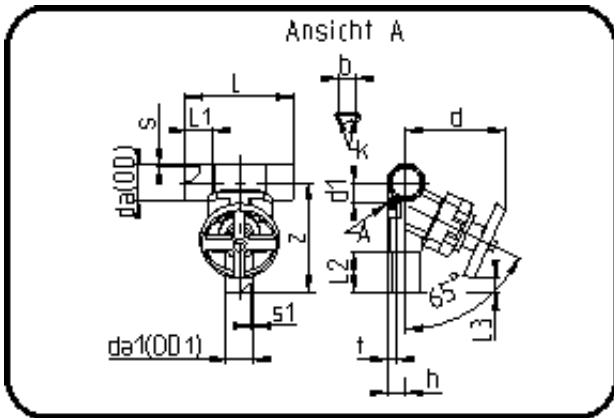


Valves



Code: 343

- T-Diaphragm Valve
- manually controlled
- EPDM/PTFE diaphragm
- 140/63 + Red. 63/40
- **Butt + IR + HPF-welding**
- **PVDF UHP natural**

Dimension	Code	Detail	Weight
140/40	35.343.1440.21	140/40 - SDR21 MOP 10 bar	4.61

	Unit	Nominale	Tol+	Tol-
L	mm	250	1.50	1.50
cv	gal	0	0.00	0.00
s	mm	6,7	0.90	0.00
t	mm	58	1.50	1.50
Kv-I	min	0	0.00	0.00
s1	mm	2,4	0.50	0.00
z	mm	281	9.00	9.00
da(OD)	mm	140	0.80	0.00
L1	mm	54	0.75	0.75
L3	mm	48	1.50	1.50
L2	mm	100	0.75	0.75
b	mm	45	0.00	0.00
DN	mm	125	0.00	0.00
d	mm	205	2.25	2.25
d1	mm	95	1.50	1.50
da1	inch	1,25	0.00	0.00
h	mm	33	0.75	0.75
K	mm	M6	0.00	0.00
da(OD1)	mm	40	0.40	0.00
DN2	mm	32	0.00	0.00
da	inch	5	0.00	0.00