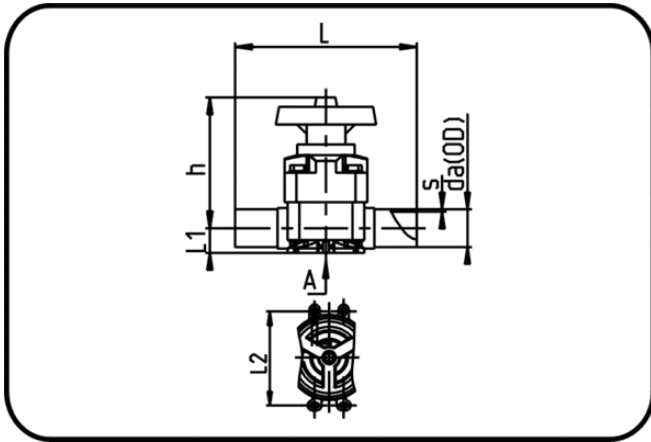


## Valves



Code: 342.15

- Diaphragm Valve
- manually controlled
- EPDM/PTFE diaphragm
- **Butt + IR-welding**
- **PP Pure grey**

Dimension	Code	Detail	da(OD) mm	s mm	L mm	L2 mm	h mm	L1 mm	Weight
20	72.342.1520.11	20 - SDR11 ISO S-5	20	1,9	133	24,5	100	16,5	0.44
25	72.342.1525.11	25 - SDR11 ISO S-5	25	2,3	144	24,5	100	16,5	0.45
32	72.342.1532.11	32 - SDR11 ISO S-5	32	2,9	154	24,5	107	20,5	0.65
40	72.342.1540.11	40 - SDR11 ISO S-5	40	3,7	193	44	144	25,5	1.41
50	72.342.1550.11	50 - SDR11 ISO S-5	50	4,6	194	44	144	32	1.46
63	72.342.1563.11	63 - SDR11 ISO S-5	63	5,8	224	44	170	38,5	2.26
75	72.342.1575.11	75 - SDR11 ISO S-5	75	6,8	284	230	254	25	5.14
90	72.342.1590.11	90 - SDR11 ISO S-5	90	8,2	300	230	254	25	5.22
110	72.342.1511.11	110 - SDR11 ISO S-5	110	10	340	280	320	25	9.92