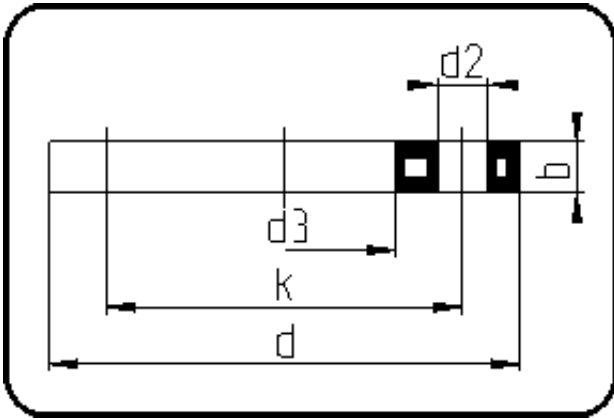


## Backing Rings, Accessories



Code: 023

- Backing Ring JIS
- steel insert/for stub flange
- injection moulded
- **Flange connection**
- PP-FRP grey

The torques nm[NM] specified in the technical catalogue are to be used as maximum values.

Dimension	Code	Detail	Weight
25	11.023.0025.11	25 - 3/4" - MOP 16 bar	0.30

	Unit	Nominale	Tol+	Tol-
da(OD)	mm	25	0.30	0.00
b	mm	14	1.50	1.50
DN	mm	20	0.00	0.00
numb	pc	4	0.00	0.00
d	mm	100	1.50	1.50
d3	mm	34	2.25	0.00
nm	[NM]	20	0.00	0.00
d2	mm	15	0.75	0.75
p	bar	16	0.00	0.00
K	mm	M12	0.00	0.00
k	mm	75	0.75	0.75