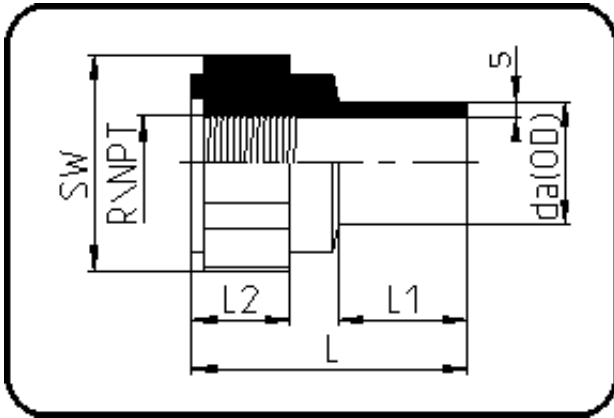


## Fittings



Code: 032.1

- Adaptor Female Thread
- NPT-thread/FRP-reinforced
- injection moulded
- **Butt + IR-welding**
- **PP Pure grey**

Dimension	Code	Detail	Weight
25	72.032.2526.11	25X3/4" SDR11 ISO S-5	0.02

	Unit	Nominale	Tol+	Tol-
da(OD)	mm	25	0.30	0.00
L	mm	51	3.00	3.00
L1	mm	24	1.50	1.50
NPT	inch	0,75	0.00	0.00
nr	ril	1,45	0.00	0.00
SW	mm	41	2.25	2.25
L2	mm	18	1.50	1.50
s	mm	2,3	0.50	0.00
E	mm	8,61	0.00	0.00
K	mm	24,58	0.00	0.00