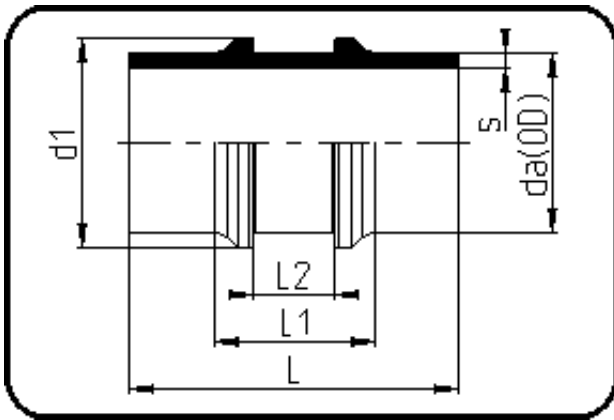


Fittings



Code: 301

- **Restrained Fitting**
- machined
- **Butt + IR-welding**
- **PP Pure grey**

Dimension	Code	Detail	Weight
225	72.301.0225.11	225X20,5 SDR11 ISO S-5	2.90

	Unit	Nominale	Tol+	Tol-
da(OD)	mm	225	0.80	0.00
L	mm	200	1.50	1.50
L1	mm	110	1.50	1.50
L2	mm	61	0.75	0.00
s	mm	20,5	2.20	0.00
d1	mm	250	0.75	0.75