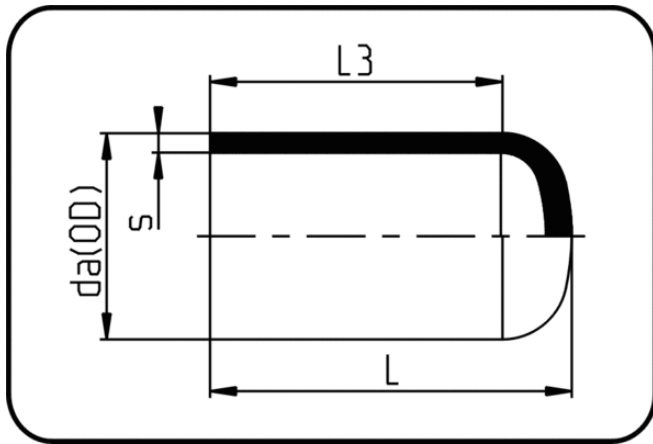


Fittings



Code: 064

- End Cap
- long spigot
- injection moulded
- **Butt + IR-welding**
- **PP natural**

Dimension	Code	Detail	da(OD) mm	s mm	L mm	L3 mm	Weight
20	16.064.0020.11	20X1,9 SDR11 ISO S-5	20	1,9	47	41	0.01
25	16.064.0025.11	25X2,3 SDR11 ISO S-5	25	2,3	49	41	0.01
32	16.064.0032.11	32X2,9 SDR11 ISO S-5	32	2,9	56	47	0.02
40	16.064.0040.11	40X3,7 SDR11 ISO S-5	40	3,7	64	51	0.03
50	16.064.0050.11	50X4,6 SDR11 ISO S-5	50	4,6	73	60	0.05
63	16.064.0063.11	63X5,8 SDR11 ISO S-5	63	5,8	84	68	0.09