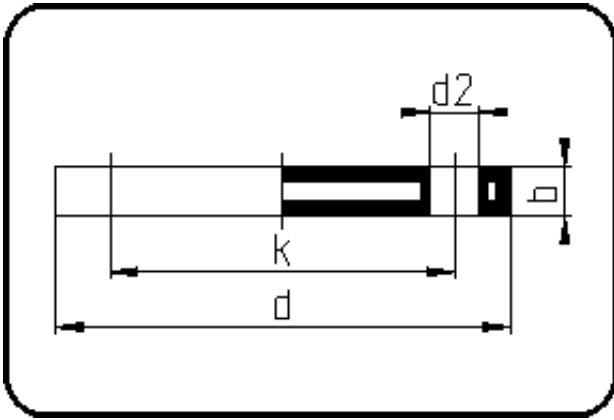


Backing Rings, Accessories



Code: 14.045

- Blind Flange DIN
- steel insert
- injection moulded+drilled PN10
- **Flange connection**
- **PP-FRP black**

The torques nm[NM] specified in the technical catalogue are to be used as maximum values.

Dimension	Code	Detail	Weight
200/225	14.045.0200.11	200/225 - MOP 16 bar	6.50

	Unit	Nominale	Tol+	Tol-
da(OD)	mm	200	0.00	0.00
b	mm	25	0.75	0.75
DN	mm	200	0.00	0.00
numb	pc	8	0.00	0.00
d	mm	340	3.00	3.00
nm	[NM]	120	0.00	0.00
d2	mm	22	0.75	0.75
p	bar	16	0.00	0.00
K	mm	M20	0.00	0.00
da	inch	8	0.00	0.00
k	mm	295	0.75	0.75