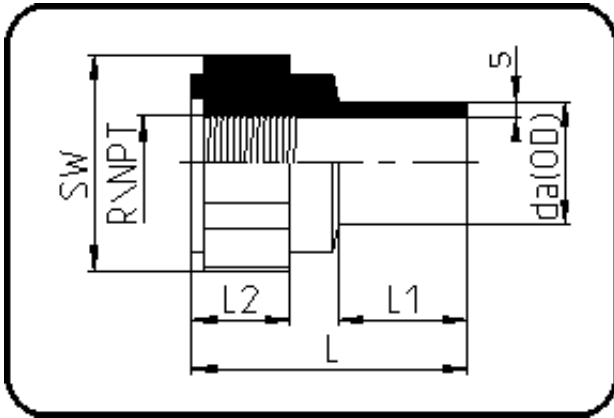


Fittings



Code: 032.1

- Adaptor Female Thread
- NPT-thread
- injection moulded
- **Butt + IR-welding**
- **PP natural**

Dimension	Code	Detail	Weight
20	16.032.2021.11	20X1/2" SDR11 ISO S-5	0.01

	Unit	Nominale	Tol+	Tol-
da(OD)	mm	20	0.30	0.00
L	mm	45	3.00	3.00
L1	mm	21	1.50	1.50
NPT	inch	0,5	0.00	0.00
nr	ril	1,45	0.00	0.00
SW	mm	32	2.25	2.25
L2	mm	16	1.50	1.50
s	mm	1,9	0.30	0.00
E	mm	8,13	0.00	0.00
K	mm	19,26	0.00	0.00