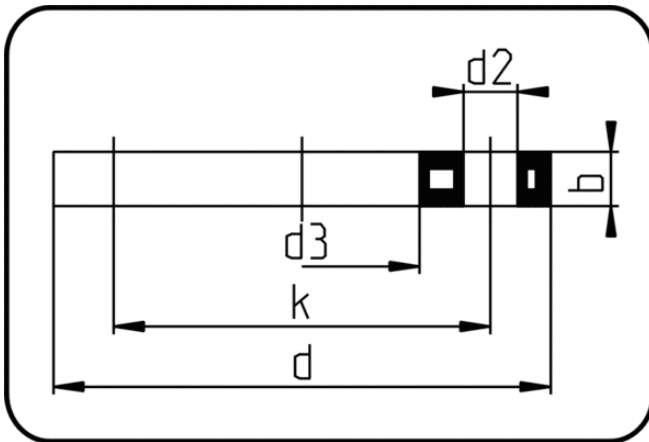


Backing Rings, Accessories



Code: 11.013

- Backing Ring ANSI
- steel insert
- injection moulded
- Flange connection
- PP-FRP grey

The torques nm[NM] specified in the technical catalogue are to be used as maximum values.

Dimension	Code	Detail	da(OD) mm	d mm	d2 mm	d3 mm	b mm	k mm	Weight
20	11.013.0020.11	20 - 1/2" - MOP 16 bar	20	95	16	28	12	60,45	0.21
25	11.013.0025.11	25 - 3/4" - MOP 16 bar	25	102	16	34	12	69,85	0.23
32	11.013.0032.11	32 - 1" - MOP 16 bar	32	114	16	42	16	79,25	0.38
40	11.013.0040.11	40 - 1 1/4" - MOP 16 bar	40	130	16	51	16	88,9	0.56
50	11.013.0050.11	50 - 1 1/2" - MOP 16 bar	50	133	16	62	18	98,55	0.55
63	11.013.0063.11	63 - 2" - MOP 16 bar	63	162	20	78	18	120,65	0.81
75	11.013.0075.11	75 - 2 1/2" - MOP 16 bar	75	184	20	92	18	139,7	1.09
90	11.013.0090.11	90 - 3" - MOP 16 bar	90	194	20	111	18	152,4	1.06
110/125	11.013.0110.11	110/125 - 4" - MOP 16 bar	110	229	20	133	18	190,5	1.54
140	11.013.0140.11	140 - 5" - MOP 16 bar	140	258	22	158	24	215,9	2.25
160	11.013.0160.11	160 - 6" - MOP 16 bar	160	283	22	178	24	241,3	2.36
200/225	11.013.0200.11	200/225 - 8" - MOP 16 bar	200	345	22	236	24	298,45	3.89
250/280	11.013.0250.11	250/280 - 10" - MOP 16 bar	250	412	25	288	26	361,95	6.09
315	11.013.0315.11	315 - 12" - MOP 16 bar	315	487	25	338	32	431,8	12.94