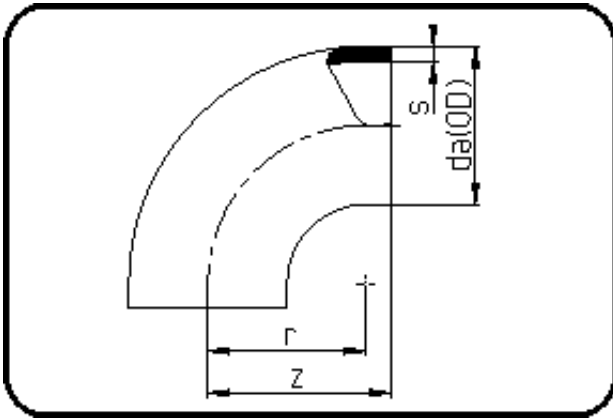


Fittings



Code: 001

- Bend 90°
- short spigot
- injection moulded
- **Butt + IR-welding**
- **PVDF UHP natural**

Dimension	Code	Detail	Weight
250	35.001.0250.33	250X7,7 SDR33 ISO S-16	5.37

	Unit	Nominale	Tol+	Tol-
da(OD)	mm	250	1.60	0.00
r	mm	250	0.00	0.00
s	mm	7,7	1.00	0.00
z	mm	287	3.00	3.00