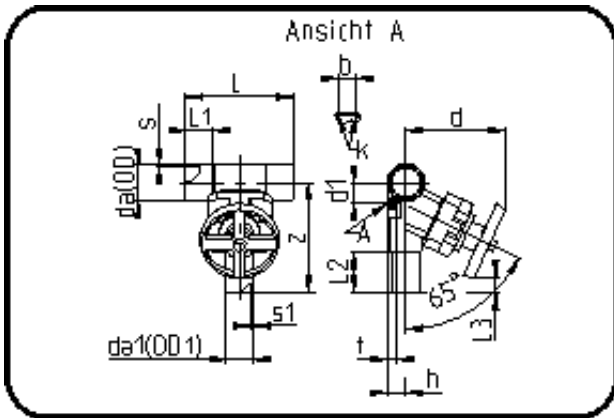


## Valves



Code: 343

- T-Diaphragm Valve
- manually controlled
- EPDM/PTFE diaphragm
- 160/63 + Red. 63/40
- **Butt + IR + HPF-welding**
- **PVDF UHP natural**

Dimension	Code	Detail	Weight
160/40	35.343.1640.21	160/40 - SDR21 MOP 10 bar	4.80

	Unit	Nominale	Tol+	Tol-
L	mm	212	1.50	1.50
cv	gal	0	0.00	0.00
s	mm	7,7	1.00	0.00
t	mm	58	1.50	1.50
Kv-I	min	0	0.00	0.00
s1	mm	2,4	0.50	0.00
z	mm	290	9.00	9.00
da(OD)	mm	160	1.00	0.00
L1	mm	54	0.75	0.75
L3	mm	48	1.50	1.50
L2	mm	100	0.75	0.75
b	mm	45	0.00	0.00
DN	mm	150	0.00	0.00
d	mm	205	3.00	3.00
d1	mm	103	1.50	1.50
da1	inch	1,25	0.00	0.00
h	mm	34	0.75	0.75
K	mm	M6	0.00	0.00
da(OD1)	mm	40	0.40	0.00
DN2	mm	32	0.00	0.00
da	inch	5	0.00	0.00