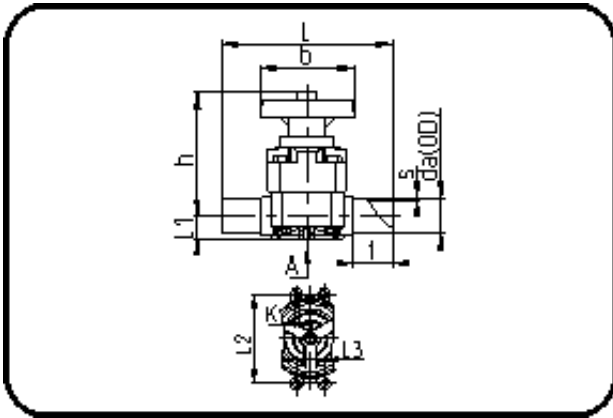


Valves



Code: 342.15

- Diaphragm Valve
- manually controlled
- EPDM/PTFE diaphragm
- **Butt + IR-welding**
- **PP natural**

Dimension	Code	Detail	Weight
32	16.342.1532.11	32X2,9 - SDR11 ISO S-5	0.64

	Unit	Nominale	Tol+	Tol-
L	mm	154	3.60	3.60
s	mm	2,9	0.50	0.00
t	mm	36	1.50	1.50
Kv- l	min	221	0.00	0.00
da(OD)	mm	32	0.30	0.00
L1	mm	20,5	0.75	0.75
L3	mm	0	0.00	0.00
L2	mm	24,5	0.75	0.75
b	mm	85	1.50	1.50
DN	mm	25	0.00	0.00
h	mm	107	4.50	4.50
K	mm	6	0.00	0.00
da	inch	1	0.00	0.00