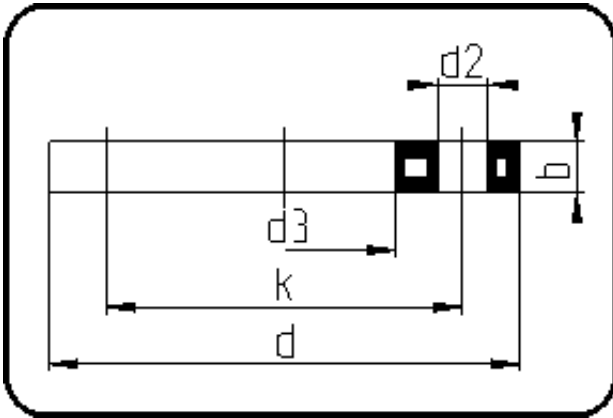


## Backing Rings, Accessories



Code: 11.013

- Backing Ring ANSI
- steel insert
- injection moulded
- **Flange connection**
- **PP-FRP grey**

The torques nm[NM] specified in the technical catalogue are to be used as maximum values.

| Dimension | Code           | Detail                 | Weight |
|-----------|----------------|------------------------|--------|
| 20        | 11.013.0020.11 | 20 - 1/2" - MOP 16 bar | 0.21   |

|        | Unit | Nominale | Tol+ | Tol- |
|--------|------|----------|------|------|
| da(OD) | mm   | 20       | 0.00 | 0.00 |
| b      | mm   | 12       | 1.50 | 1.50 |
| numb   | pc   | 4        | 0.00 | 0.00 |
| d      | mm   | 95       | 1.50 | 1.50 |
| d3     | mm   | 28       | 2.25 | 0.00 |
| nm     | [NM] | 20       | 0.00 | 0.00 |
| d2     | mm   | 16       | 0.75 | 0.75 |
| p      | bar  | 16       | 0.00 | 0.00 |
| da     | inch | 0,5      | 0.00 | 0.00 |
| k      | mm   | 60,45    | 0.75 | 0.75 |