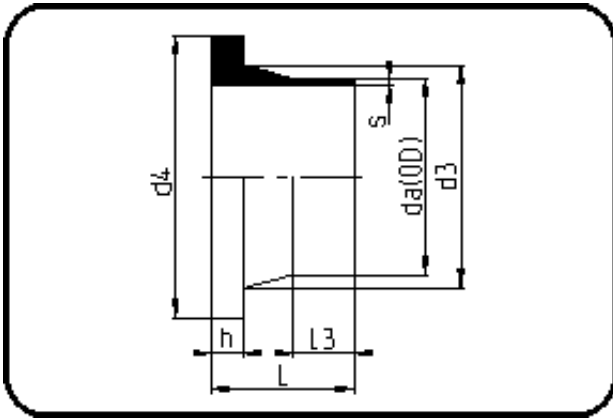


Fittings



Code: 012.1

- **Stub Flange ANSI**
- short spigot
- injection moulded
- **Butt + IR-welding**
- **PP Pure grey**

Backing Rings please see Accessories.

Dimension	Code	Detail	Weight
75	72.012.1075.11	75X6,8 SDR11 ISO S-5	0.17

	Unit	Nominale	Tol+	Tol-
da(OD)	mm	75	0.70	0.00
L	mm	50,5	3.75	0.00
L3	mm	18	1.50	0.00
s	mm	6,8	0.80	0.00
d3	mm	89	0.00	3.00
h	mm	16	1.50	0.00
d4	mm	117	0.00	1.50
da	inch	2,5	0.00	0.00