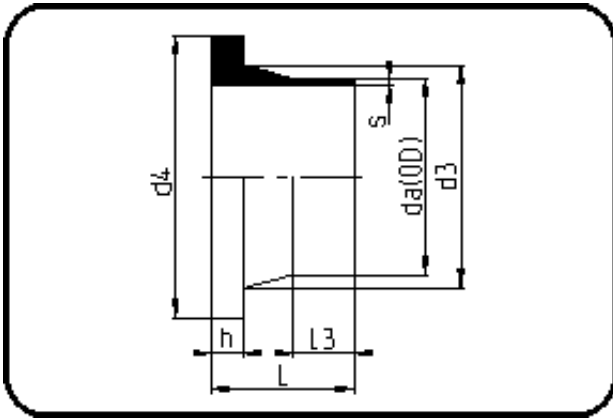


Fittings



Code: 012

- **Stub Flange DIN**
- short spigot
- injection moulded
- **Butt + IR-welding**
- **PP Pure grey**

Backing Rings please see Accessories.

Dimension	Code	Detail	Weight
32	72.012.0032.11	32X2,9 SDR11 ISO S-5	0.04

	Unit	Nominale	Tol+	Tol-
da(OD)	mm	32	0.30	0.00
L	mm	50	3.75	0.00
L3	mm	25	1.50	0.00
s	mm	2,9	0.50	0.00
d3	mm	40	0.00	3.00
h	mm	10	1.50	0.00
d4	mm	68	0.00	1.50