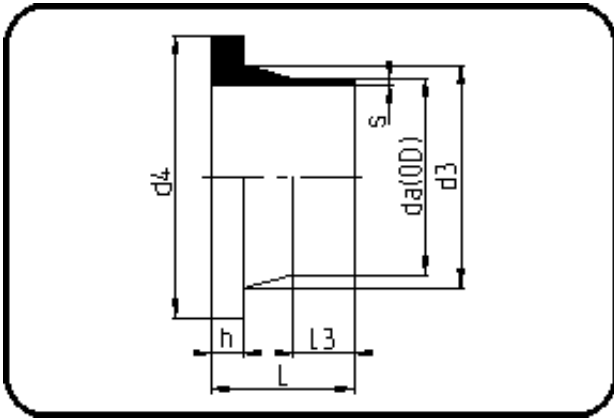


Fittings



Code: 012.1

- **Stub Flange ANSI**
- short spigot
- injection moulded
- **Butt + IR-welding**
- **PVDF UHP natural**

Backing Rings please see Accessories.

Dimension	Code	Detail	Weight
110	35.012.1110.21	110X5,3 SDR21 ISO S-10	0.56

	Unit	Nominale	Tol+	Tol-
da(OD)	mm	110	0.50	0.00
L	mm	80	3.75	0.00
L3	mm	40	1.50	0.00
s	mm	5,3	0.80	0.00
d3	mm	125	0.00	4.50
h	mm	12	0.75	0.00
d4	mm	158	0.00	1.50
da	inch	4	0.00	0.00