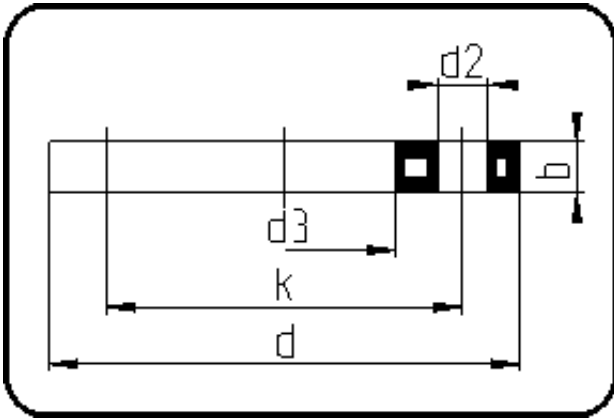


Backing Rings, Accessories



Code: 023

- Backing Ring JIS
- steel insert/for stub flange
- injection moulded
- **Flange connection**
- **PP-FRP grey**

The torques nm[NM] specified in the technical catalogue are to be used as maximum values.

Dimension	Code	Detail	Weight
110/125	11.023.0110.11	110/125 - 4" - MOP 16 bar	1.00

	Unit	Nominale	Tol+	Tol-
da(OD)	mm	110	1.00	0.00
b	mm	18	1.50	1.50
DN	mm	100	0.00	0.00
numb	pc	8	0.00	0.00
d	mm	210	1.50	1.50
d3	mm	133	2.25	0.00
nm	[NM]	55	0.00	0.00
d2	mm	19	0.75	0.75
p	bar	16	0.00	0.00
K	mm	M16	0.00	0.00
k	mm	175	0.75	0.75