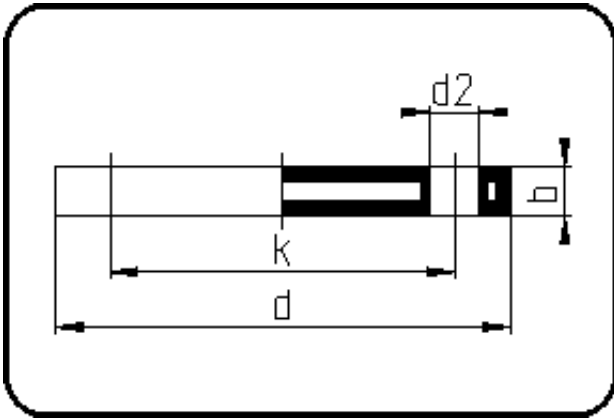


Backing Rings, Accessories



Code: 14.045

- Blind Flange DIN
- steel insert
- inj. moulded+drilled PN10/16
- **Flange connection**
- **PP-FRP black**

The torques nm[NM] specified in the technical catalogue are to be used as maximum values.

Dimension	Code	Detail	Weight
75	14.045.0075.11	75 - MOP 16 bar	1.64

	Unit	Nominale	Tol+	Tol-
da(OD)	mm	75	0.00	0.00
b	mm	19	0.75	0.75
DN	mm	65	0.00	0.00
numb	pc	4	0.00	0.00
d	mm	185,5	3.00	3.00
nm	[NM]	60	0.00	0.00
d2	mm	18	0.75	0.75
p	bar	16	0.00	0.00
K	mm	M16	0.00	0.00
da	inch	2,5	0.00	0.00
k	mm	145	0.75	0.75