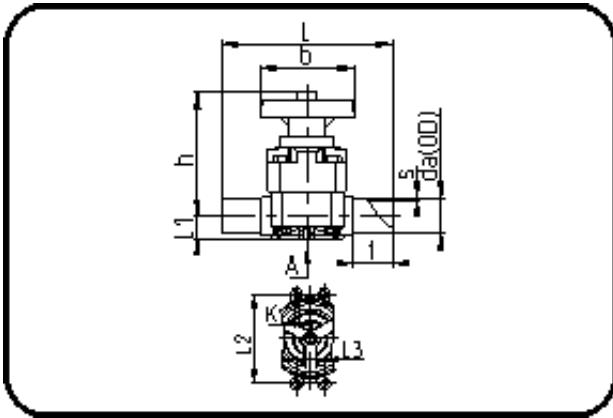


Valves



Code: 342.15

- Diaphragm Valve
- manually controlled
- EPDM/PTFE diaphragm
- **Butt + IR-welding**
- **PP Pure grey**

Dimension	Code	Detail	Weight
40	72.342.1540.11	40 - SDR11 ISO S-5	1.41

	Unit	Nominale	Tol+	Tol-
L	mm	193	4.50	4.50
s	mm	3,7	0.50	0.00
t	mm	46	1.50	1.50
Kv- l	min	450	0.00	0.00
da(OD)	mm	40	0.40	0.00
L1	mm	25,5	0.75	0.75
L3	mm	0	0.00	0.00
L2	mm	44	0.75	0.75
b	mm	135	1.50	1.50
DN	mm	32	0.00	0.00
h	mm	144	3.00	3.00
K	mm	M8	0.00	0.00
da	inch	1,25	0.00	0.00