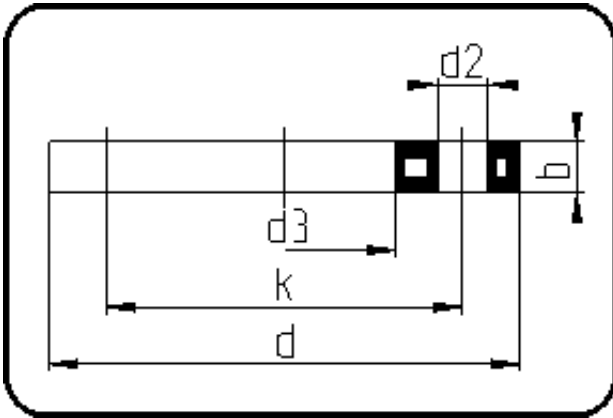


Backing Rings, Accessories



Code: 11.014

- Backing Ring DIN
- steel insert/for stub flange
- inj. moulded+drilled PN10/16
- **Flange connection**
- **PP-FRP grey**

The torques nm[NM] specified in the technical catalogue are to be used as maximum values.

| Dimension | Code | Detail | Weight |
|-----------|----------------|-----------------|--------|
| 32 | 11.014.0032.11 | 32 - MOP 16 bar | 0.36 |

| | Unit | Nominale | Tol+ | Tol- |
|--------|------|----------|------|------|
| da(OD) | mm | 32 | 0.00 | 0.00 |
| b | mm | 16 | 1.50 | 1.50 |
| DN | mm | 25 | 0.00 | 0.00 |
| numb | pc | 4 | 0.00 | 0.00 |
| d | mm | 115 | 1.50 | 0.00 |
| d3 | mm | 42 | 2.25 | 0.00 |
| nm | [NM] | 30 | 0.00 | 0.00 |
| d2 | mm | 14 | 0.75 | 0.75 |
| p | bar | 16 | 0.00 | 0.00 |
| K | mm | M12 | 0.00 | 0.00 |
| k | mm | 85 | 0.75 | 0.75 |