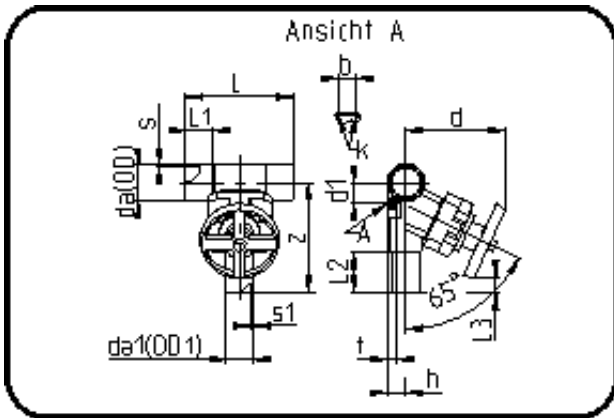


Valves



Code: 343

- T-Diaphragm Valve
- manually controlled
- EPDM/PTFE diaphragm
- **Butt + IR + HPF-welding**
- **PVDF UHP natural**

Dimension	Code	Detail	Weight
90/40	35.343.9040.21	90/40 - SDR21 MOP 10 bar	3.40

	Unit	Nominale	Tol+	Tol-
L	mm	210	1.50	1.50
cv	gal	32,2	0.00	0.00
s	mm	4,3	0.70	0.00
t	mm	68	1.50	1.50
Kv-I	min	460	0.00	0.00
s1	mm	2,4	0.50	0.00
z	mm	255	1.50	1.50
da(OD)	mm	90	0.40	0.00
L1	mm	33	0.75	0.75
L3	mm	50	1.50	1.50
L2	mm	88	0.75	0.75
b	mm	45	0.00	0.00
DN	mm	80	0.00	0.00
d	mm	199	3.00	3.00
d1	mm	72	1.50	1.50
da1	inch	1,25	0.00	0.00
h	mm	46,5	0.75	0.75
K	mm	M8	0.00	0.00
da(OD1)	mm	40	0.40	0.00
DN2	mm	32	0.00	0.00
da	inch	3	0.00	0.00