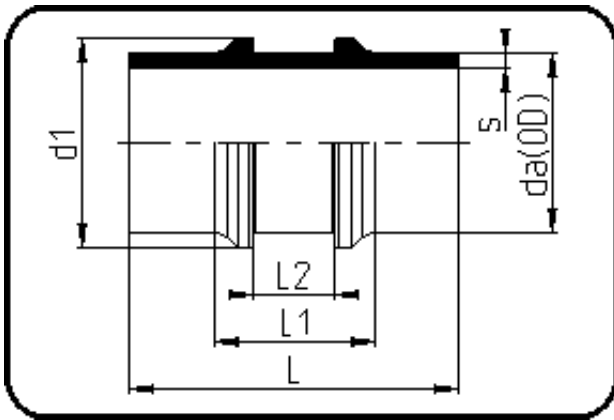


Fittings



Code: 301

- **Restrained Fitting**
- machined
- **Butt + IR-welding**
- **PP Pure grey**

Dimension	Code	Detail	Weight
25	72.301.0025.11	25X2,3 SDR11 ISO S-5	0.04

	Unit	Nominale	Tol+	Tol-
da(OD)	mm	25	0.30	0.00
L	mm	120	1.50	1.50
L1	mm	53	1.50	1.50
L2	mm	32,5	0.75	0.00
s	mm	2,3	0.50	0.00
d1	mm	33	0.75	0.75