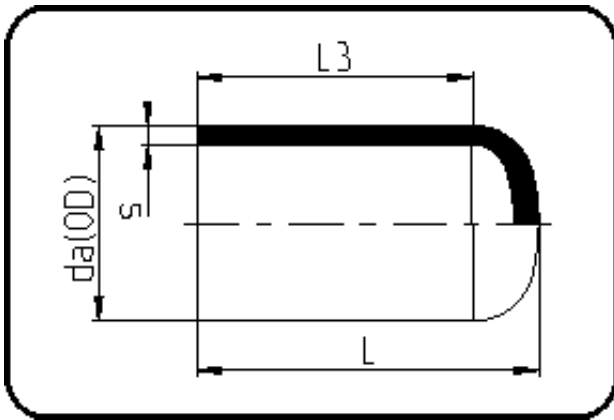


## Fittings



Code: 064

- End Cap
- long spigot
- injection moulded
- **Butt + IR-welding**
- **PP Pure grey**

Dimension	Code	Detail	Weight
75	72.064.0075.11	75X6,8 SDR11 ISO S-5	0.16

	Unit	Nominale	Tol+	Tol-
da(OD)	mm	75	0.70	0.00
L	mm	93	1.50	1.50
L3	mm	75	1.50	1.50
s	mm	6,8	0.80	0.00