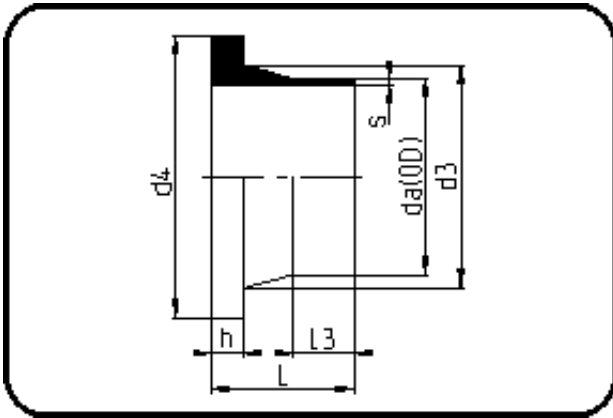


Fittings



Code: 012.1

- **Stub Flange ANSI**
- short spigot
- injection moulded
- **Butt + IR + HPF-welding**
- **PVDF UHP natural**

Backing Rings please see Accessories.

Dimension	Code	Detail	Weight
63	35.012.1063.21	63X3,0 SDR21 ISO S-10	0.17

	Unit	Nominale	Tol+	Tol-
da(OD)	mm	63	0.40	0.00
L	mm	50	3.75	0.00
L3	mm	19,5	1.50	0.00
s	mm	3	0.60	0.00
d3	mm	76	0.00	3.00
h	mm	10	0.75	0.00
d4	mm	100,4	0.00	1.50
da	inch	2	0.00	0.00