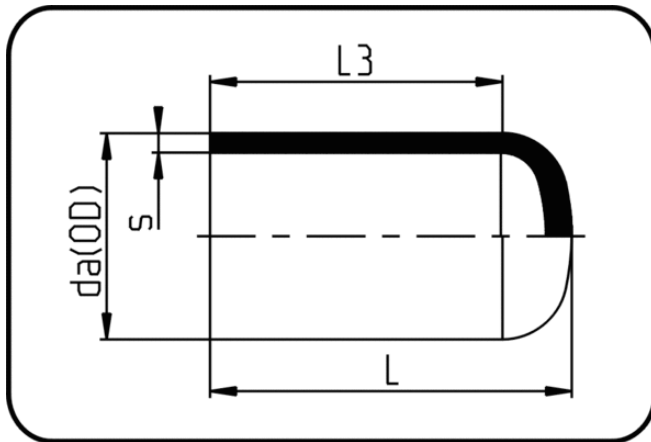


Elongated Fittings



Code: 064

- End Cap
- long spigot
- W/P-TW
- injection moulded+chamfered
- **Butt + E-socket-welding**
- **PE 100-RC black**

Dimension	Code	Detail	da(OD) mm	s mm	L mm	L3 mm	Weight
63	70.064.0063.09	63X7,1 SDR9 PN20	63	7,1	81,5	66,5	0.12
75	70.064.0075.09	75X8,4 SDR9 PN20	75	8,4	94	75	0.17
90	70.064.0090.09	90X10,1 SDR9 PN20	90	10,1	100	79	0.31
110	70.064.0110.09	110X12,3 SDR9 PN20	110	12,3	118	94	0.54
125	70.064.0125.09	125X14 SDR9 PN20	125	14	128,5	100,5	0.76
160	70.064.0160.09	160X17,9 SDR9 PN20	160	17,9	146	103,5	1.38
200	70.064.0200.09	200x22,4 SDR9 PN20	200	22,4	180	121,5	2.58
225	70.064.0225.09	225X25,2 SDR9 PN20	225	25,2	192	125	3.53