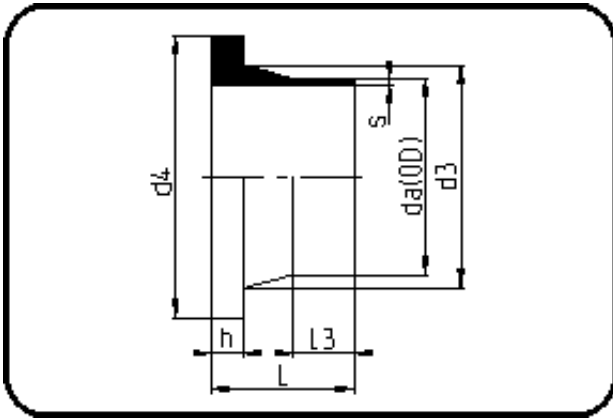


Fittings with short Spigot



Code: 012.1

- Stub Flange ANSI
- short spigot
- injection moulded
- **Butt-welding**
- **PE 100-RC black**

Backing Rings please see Accessories.

Dimension	Code	Detail	Weight
280	70.012.1280.11	280X25,4 SDR11 ISO S-5	3.40

	Unit	Nominale	Tol+	Tol-
da(OD)	mm	280	2.60	0.00
L	mm	128	4.00	0.00
L3	mm	58	3.00	0.00
s	mm	25,4	2.70	0.00
d3	mm	288	0.00	4.00
h	mm	35	1.00	0.00
d4	mm	320	0.00	1.00
da	inch	11	0.00	0.00