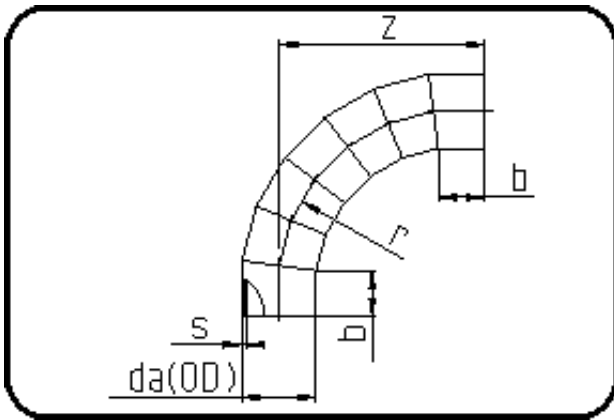


Segmented Fittings



Code: 328

- Bend 90°
- 7 segments
- full pressure rated
- segmented
- **Butt + E-socket-welding**
- **PE 100-RC black**

Dimension	Code	Detail	Weight
400	70.328.0400.09	400x44,7 SDR9 ISO S-4	120.50

	Unit	Nominale	Tol+	Tol-
da(OD)	mm	400	0.00	0.00
b	mm	300	0.00	0.00
r	mm	1.149	0.00	0.00
s	mm	44,7	0.00	0.00
t	mm	355	0.00	0.00
t1	mm	250	0.00	0.00
t2	mm	353	0.00	0.00
z	mm	1.324	60.00	60.00