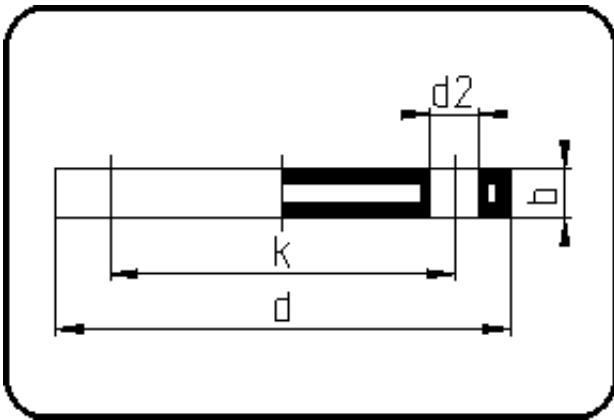


Backing Rings, Accessories



Code: 14.045

- Blind Flange DIN
- steel insert
- inj. moulded+drilled PN10/16
- **Flange connection**
- **PP-FRP black**

The torques nm[NM] specified in the technical catalogue are to be used as maximum values.

Dimension	Code	Detail	Weight
160/180	14.045.0160.11	160/180 - MOP 16 bar	4.87

	Unit	Nominale	Tol+	Tol-
da(OD)	mm	160	0.00	0.00
b	mm	23	0.75	0.75
DN	mm	150	0.00	0.00
numb	pc	8	0.00	0.00
d	mm	285	3.00	3.00
nm	[NM]	95	0.00	0.00
d2	mm	22	0.75	0.75
p	bar	16	0.00	0.00
K	mm	M20	0.00	0.00
da	inch	6	0.00	0.00
k	mm	240	0.75	0.75