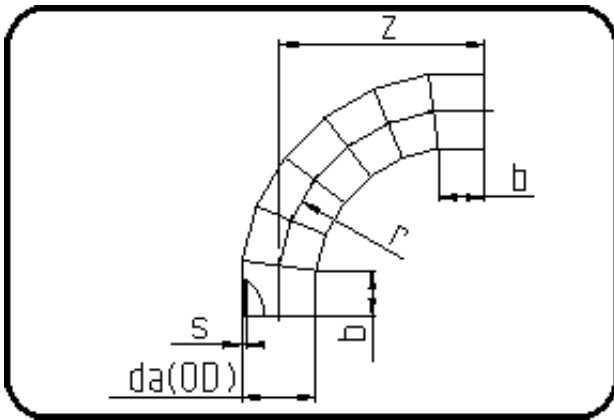


## Segmented Fittings



Code: 328

- Bend 90°
- 7 segments
- full pressure rated
- segmented
- **Butt + E-socket-welding**
- **PE 100-RC black**

Dimension	Code	Detail	Weight
315	70.328.0315.09	315x35,2 SDR9 ISO S-4	38.00

	Unit	Nominale	Tol+	Tol-
da(OD)	mm	315	0.00	0.00
b	mm	175	0.00	0.00
r	mm	613	0.00	0.00
s	mm	35,2	0.00	0.00
t	mm	203	0.00	0.00
t1	mm	120	0.00	0.00
t2	mm	216	0.00	0.00
z	mm	728	42.00	42.00