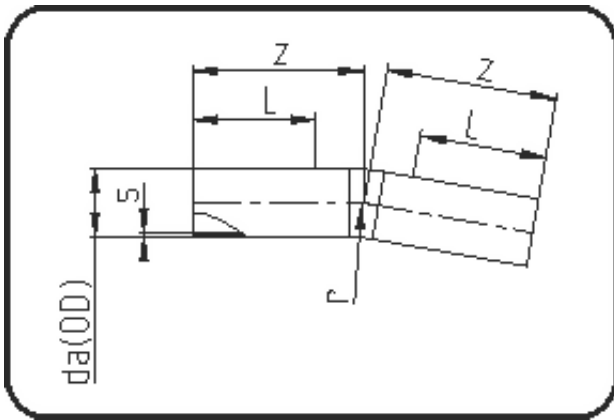


## Sweep Bends



Code: 394

- Sweep Bend 11°
- radius 1.5 x OD
- formed out of pipe
- **Butt + E-socket-welding**
- **PE 100-RC black**

Dimension	Code	Detail	Weight
280	70.394.0280.17	280 SDR17 ISO S-8 10 bar	15.20

	Unit	Nominale	Tol+	Tol-
da(OD)	mm	280	0.00	0.00
L	mm	300	0.00	0.00
r	mm	420	0.00	0.00
s	mm	16,6	0.00	0.00
z	mm	550	75.00	75.00