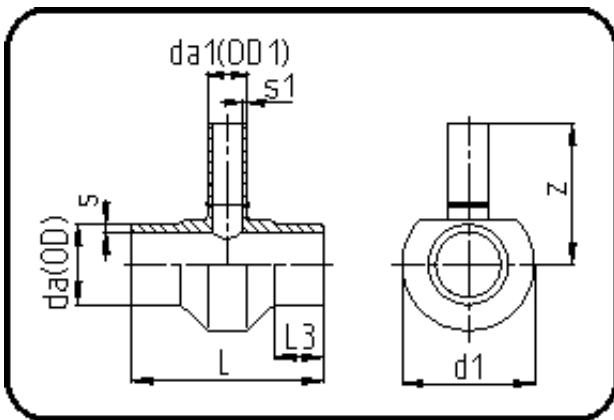


Fittings with short Spigot



Code: 307

- Tee reduced
- short spigot
- machined
- **Butt-welding**
- PE 100-RC black

Dimension	Code	Detail	Weight
355/250	70.307.3525.09	355/250 SDR9 ISO S-4	36.00

	Unit	Nominale	Tol+	Tol-
da(OD)	mm	355	3.20	0.00
L	mm	450	4.50	4.50
L3	mm	75	1.50	1.50
s	mm	39,7	4.10	0.00
d1	mm	476	1.50	1.50
s1	mm	27,9	2.90	0.00
da(OD1)	mm	250	2.30	0.00
z	mm	352,5	22.50	22.50