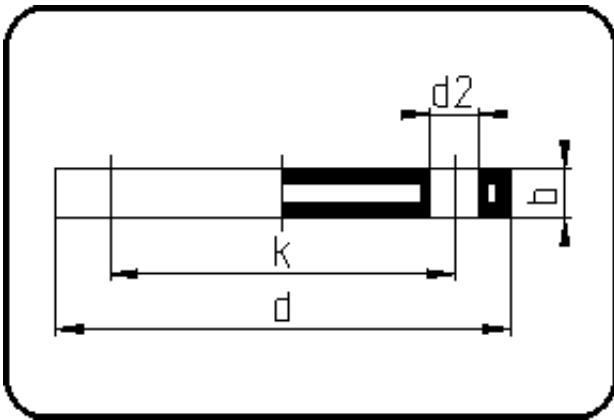


## Backing Rings, Accessories



Code: 14.045

- Blind Flange DIN
- steel insert
- injection moulded+drilled PN10
- **Flange connection**
- **PP-FRP black**

The torques nm[NM] specified in the technical catalogue are to be used as maximum values.

Dimension	Code	Detail	Weight
400	14.045.0400.11	400 - MOP 16 bar	50.44

	Unit	Nominale	Tol+	Tol-
da(OD)	mm	400	0.00	0.00
b	mm	46	0.75	0.75
DN	mm	400	0.00	0.00
numb	pc	16	0.00	0.00
d	mm	574	4.50	4.50
nm	[NM]	170	0.00	0.00
d2	mm	27	0.75	0.75
p	bar	16	0.00	0.00
K	mm	M24	0.00	0.00
da	inch	14	0.00	0.00
k	mm	515	0.75	0.75