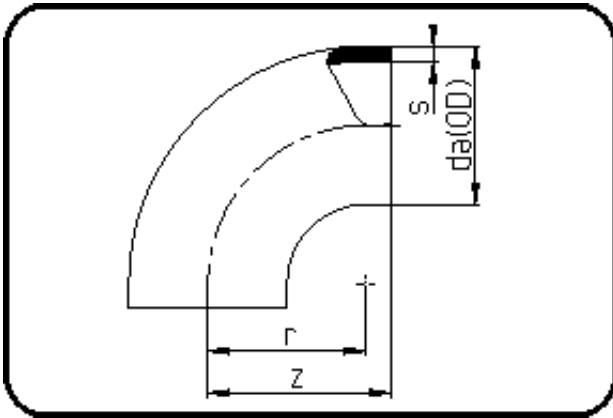


## Fittings with short Spigot



Code: 001

- Bend 90°
- short spigot
- injection moulded
- **Butt-welding**
- PE 100-RC black

Dimension	Code	Detail	Weight
75	70.001.0075.11	75X6,8 SDR11 ISO S-5	0.21

	Unit	Nominale	Tol+	Tol-
da(OD)	mm	75	0.70	0.00
r	mm	75	0.00	0.00
s	mm	6,8	0.80	0.00
z	mm	85	3.00	3.00