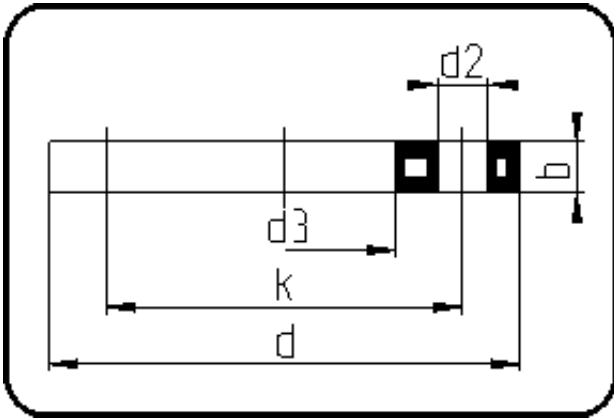


## Backing Rings, Accessories



Code: 14.014

- Backing Ring DIN
- steel insert/for stub flange
- inj. moulded+drilled PN10/16
- **Flange connection**
- **PP-FRP black**

The torques nm[NM] specified in the technical catalogue are to be used as maximum values.

Dimension	Code	Detail	Weight
40	14.014.0040.11	40 - MOP 16 bar	0.61

	Unit	Nominale	Tol+	Tol-
da(OD)	mm	40	0.00	0.00
b	mm	18	1.50	1.50
DN	mm	32	0.00	0.00
numb	pc	4	0.00	0.00
d	mm	140	1.50	0.00
d3	mm	51	2.25	0.00
nm	[NM]	30	0.00	0.00
d2	mm	18	0.75	0.75
p	bar	16	0.00	0.00
K	mm	M16	0.00	0.00
k	mm	100	0.75	0.75