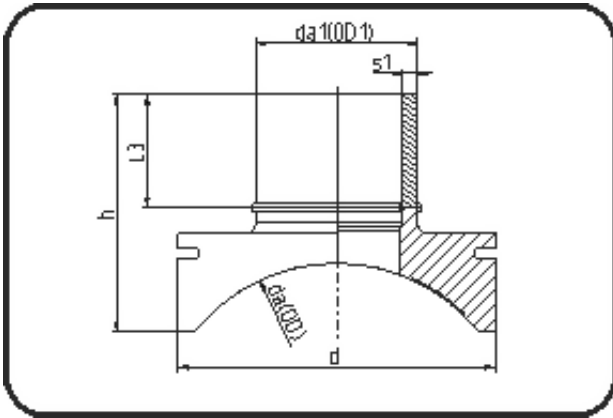


Saddles



Code: 289

- **Spigot saddle System Topload**

- machined
- **Electro-fusion**
- **PE 100-RC black**

Other MOP as well as further dimensions on request. Installation Set please see Welding Technology.

Dimension	Code	Detail	Weight
800/160	70.289.8016.11	800/160 SDR11 MOP 16 bar	4.10

	Unit	Nominale	Tol+	Tol-
da(OD)	mm	800	0.00	0.00
L3	mm	113	10.00	0.00
d	mm	315	1.00	1.00
s1	mm	14,6	1.60	0.00
h	mm	211	10.00	0.00
da(OD1)	mm	160	1.00	0.00