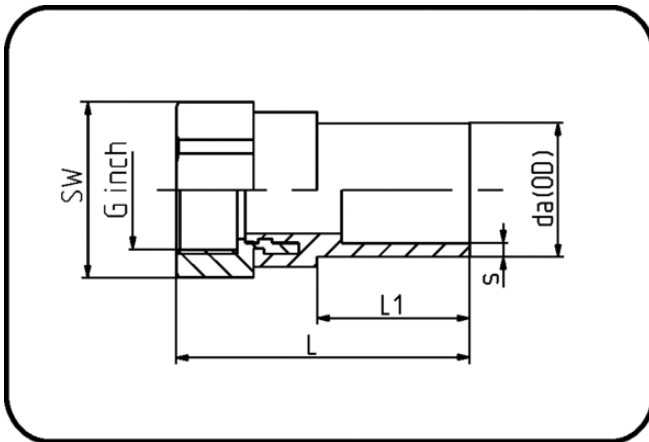


## Electro Fusion Fittings



Code: 180

- Brass-R-female thread
- for E-Adaptor
- W/P-TW
- injection moulded
- **Electro-fusion**
- **PE 100-RC black**

Dimension	Code	Detail	da(OD) mm	s mm	L mm	L1 mm	SW mm	G inch	Weight
20 X 1/2	70.180.0020.11	20X1/2" SDR 11 PN16	20	3	76	40	32	0,5	0.13
25 X 3/4	70.180.0025.11	25X3/4" SDR 11 PN16	25	3	80	43	36	0,75	0.15
32 X 1	70.180.0032.11	32X1" SDR 11 PN16	32	3	88	46	41	1	0.20
40 X 1 1/4	70.180.0040.11	40X1 1/4" SDR 17-11 PN16	40	3,7	98	51	50	1,25	0.30
50 X 1 1/2	70.180.0050.11	50X1 1/2" SDR 17-11 PN16	50	4,6	110	57	60	1,5	0.54
63 X 2	70.180.0063.11	63X2" SDR 17-11 PN16	63	5,8	129	65	70	2	0.77