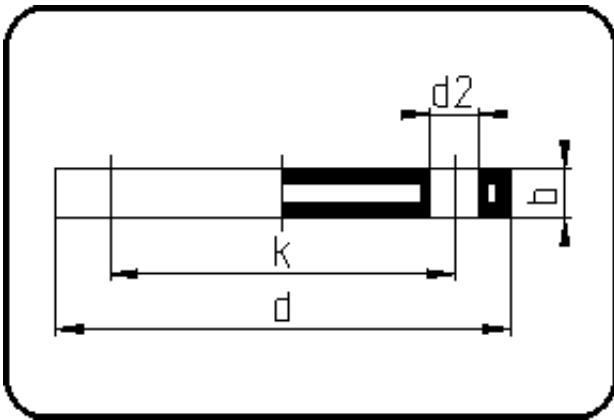


Backing Rings, Accessories



Code: 14.045

- **Blind Flange DIN**
- steel insert
- inj. moulded+drilled PN10/16
- **Flange connection**
- **PP-FRP black**

The torques nm[NM] specified in the technical catalogue are to be used as maximum values.

Dimension	Code	Detail	Weight
25	14.045.0025.11	25 - MOP 16 bar	0.38

	Unit	Nominale	Tol+	Tol-
da(OD)	mm	25	0.00	0.00
b	mm	14	0.75	0.75
DN	mm	20	0.00	0.00
numb	pc	4	0.00	0.00
d	mm	108	1.50	1.50
nm	[NM]	20	0.00	0.00
d2	mm	14	0.75	0.75
p	bar	16	0.00	0.00
K	mm	M12	0.00	0.00
da	inch	0,75	0.00	0.00
k	mm	75	0.75	0.75